

Specifications: 450PM manual probe station

We are proud to offer our product specifications for the model 450PM probing station (models A and B). The 450PM is designed to provide you an extremely cost-effective solution for your basic analytical probing needs. Yet the system also retains the efficiency, ease of use and intuitive look and feel that you have come to expect from Micromanipulator probe stations. The 450PM is compatible with all our 4000 / 8000 series probing accessories, maximizing flexibility in your lab. And as always, we provide an upgrade path to advance your tool capability should your requirements change over time.

At Micromanipulator, we understand your business concerns, challenges, and we share common goals. We share your concerns over lab operating cost, tool cost of ownership, operator training, and return on investment. That's why we strive to provide cost effective, efficient solutions that are reliable, easy to use, and configurable to your needs as your technology changes. That's also why we've become known for our support and application consultation. When you buy from Micromanipulator, you're purchasing more than a probe station; you're investing in a relationship with a business partner who's focused on your success.



Micromanipulator

1555 Forrest Way
Carson City, NV 89706

TF : 800.654.5659
PH : 775.882.2400
FX : 775.882.7694

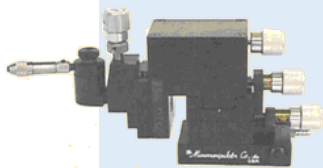
www.micromanipulator.com • info@micromanipulator.com

Available Options

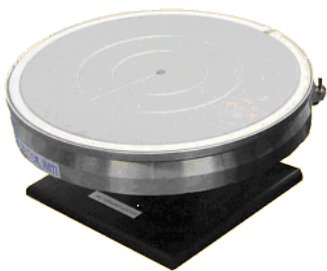
- Hot chucks
- Probe card holders (450PM-A only)
- High frequency probes and manipulators
- Coaxial or Triaxial probe holders
- Light tight enclosures
- Vibration isolation tables
- Camera systems
- Extended warranties and service programs



110 / 210 Series Manipulators



525 Series Manipulators



H1000 Series Thermal Chucks (optional)

Specifications

X-Y Stage Movement

- Cast stage cores for faster settling time.
- Cross roller bearing way construction for high reliability and precision.
- X and Y axis range 8" x 8" (200mm x 200mm).
- Manual control, repeatability and accuracy dependent upon operator.
- Resolution 1 μ m per degree.

Chuck Theta:

- Provided through easy-to-use thumb screw secured rotatable hub on fixed chuck post.

Microscope

- Stereo Zoom boom mount allows up to 8" (200mm) in Y positioning with rotation on mounting pole up to 180 degrees.
- Vertical positioning up to 8" (200mm) gross with 1" microscope fine focus control.

Platen

450PM-A Models

- 1" (25.4mm) Z axis range via platen fine lift control.
- Platen fine lift resolution 40 microns (0.0015") per rotation.
- Large area, aluminum (Supports vacuum base manipulators only)

450PM-B Models

- Fixed, stable platen.
- Large area, aluminum

Facility Requirements

- Power 100-240v AC (for microscope illuminator) 1.0/0.5 ampere 60/50 Hz.
- Vacuum 20 inch Hg.

Test Station Dimensions

- Footprint (Width x Depth) 22.75" x 23.35" (57.7x59.3cm).
- Station Width, Depth, Height 28.5" x 26.75" x 21.5" (72.3x67.9x 54.6cm).
- Weight: 191 lb. (86.6 kg).

Construction

- Material: Machined aluminum plate.
- Finish: Grained black anodized and grained natural finish.