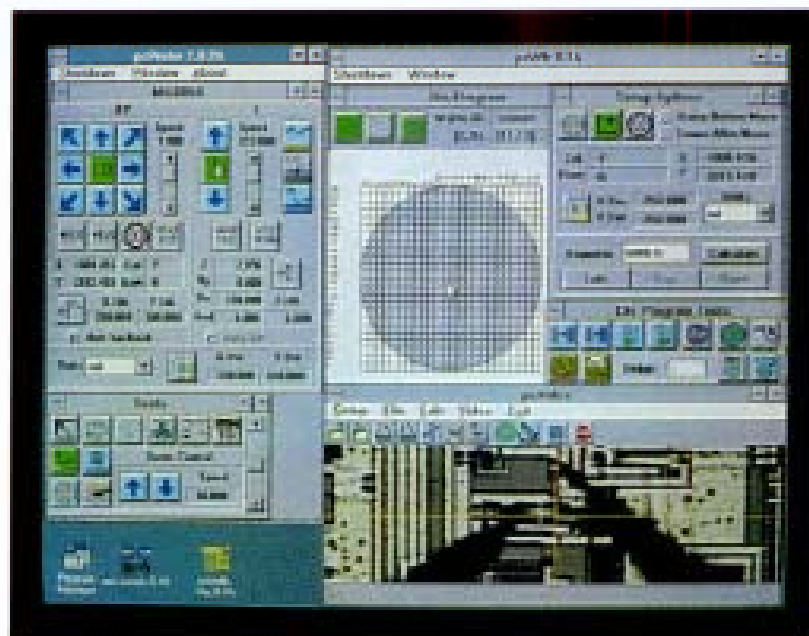


Semi-automatic probing is easier now than ever before. Building upon an industry-proven feature set, Micromanipulator's evolutionary pcProbe 2.0 Control System offers the ultimate in flexibility and new, state-of-the-art capabilities.

A modular program architecture lets you implement the functions you require today, then add new ones as you need them. In-die stepping, enhanced video and a simplified user interface make pcProbe 2.0 more powerful and easier to use. A comprehensive Dynamic Data Exchange and Dynamic Link Library



The complete document is too large for efficient web site transmission

Our Features: and must be ordered

- Comprehensive functionality
 - Wafer Mapping
 - Die stepping and in-die stepping
 - Real-time & freeze frame video
 - Multiple device configuration options
 - Interactive device navigation & control
 - RS-232 and IEEE-488 interfaces

Your Benefits:
One system can serve as the control center for your entire test lab – supporting analytical, parametric & test probing activities

- Simplified graphical format using Windows platform.

Icon based click-and-go operation lets you focus on your work – not on programming the system. Use the most user-friendly PC probing control system available.

- Modular design

Tailor a configuration to match your current probing environment, then add capability when you need it.

- Automatic and Interactive control

Launch hands-off probing programs to generate statistical data or small volume production testing, then switch to hands-on interactive probing for failure analysis and internal circuit probing.