

# CUSTOMER PROBE HOLDER REQUEST FORM

Specifications

## Abstract

Different probing setups and applications often require specialty designed probe holders. Micromanipulator's manufacturing flexibility enables the fabrication of custom probe holders designed to meet unique requirements.

In order to produce a proper custom probe, The Micromanipulator Company's probe making department requires a certain set of parameters. Please identify your requirements:

A. **PROBE HOLDER MODEL** (circle one) 74 75 76 77 79

B. **TYPE OF WIRE/CABLE NEEDED**

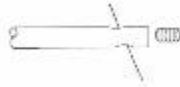
(circle one) Single Coax Triax

(circle one) Standard Triboelectric

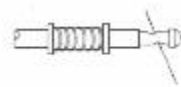
C. **TYPE OF PROBE ATTACHMENT** (check one of the boxes below)



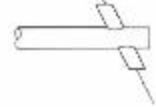
BAYONET



SET SCREW



PRESSURE SPRING



PIN JACK

D. For angle relationships in determining attack angle reference Figure 1.

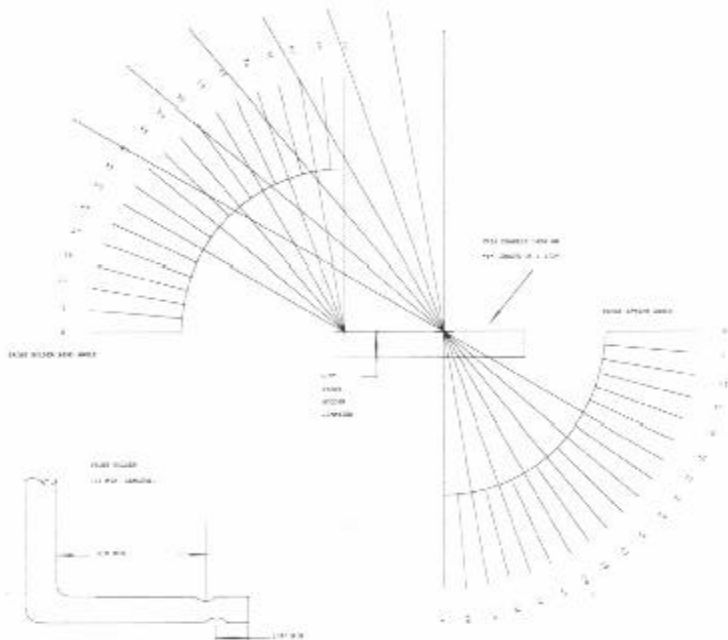


Figure 1



1555 Forrest Way  
Carson City, NV 89706  
info@micromanipulator.com  
www.micromanipulator.com  
Tel: 775-882-2400  
Tel: 800-654-5659  
Fax: 775-882-7694  
Made in the USA

A1009062 rev 4 © 1/01

Specifications subject to change without notice.

# Specifications

E. Using the Chart, Model and Protractor shown in Figure 2, determine the probe point attack angle and appropriate "X" and "Y" bends then enter the data in the appropriate boxes.

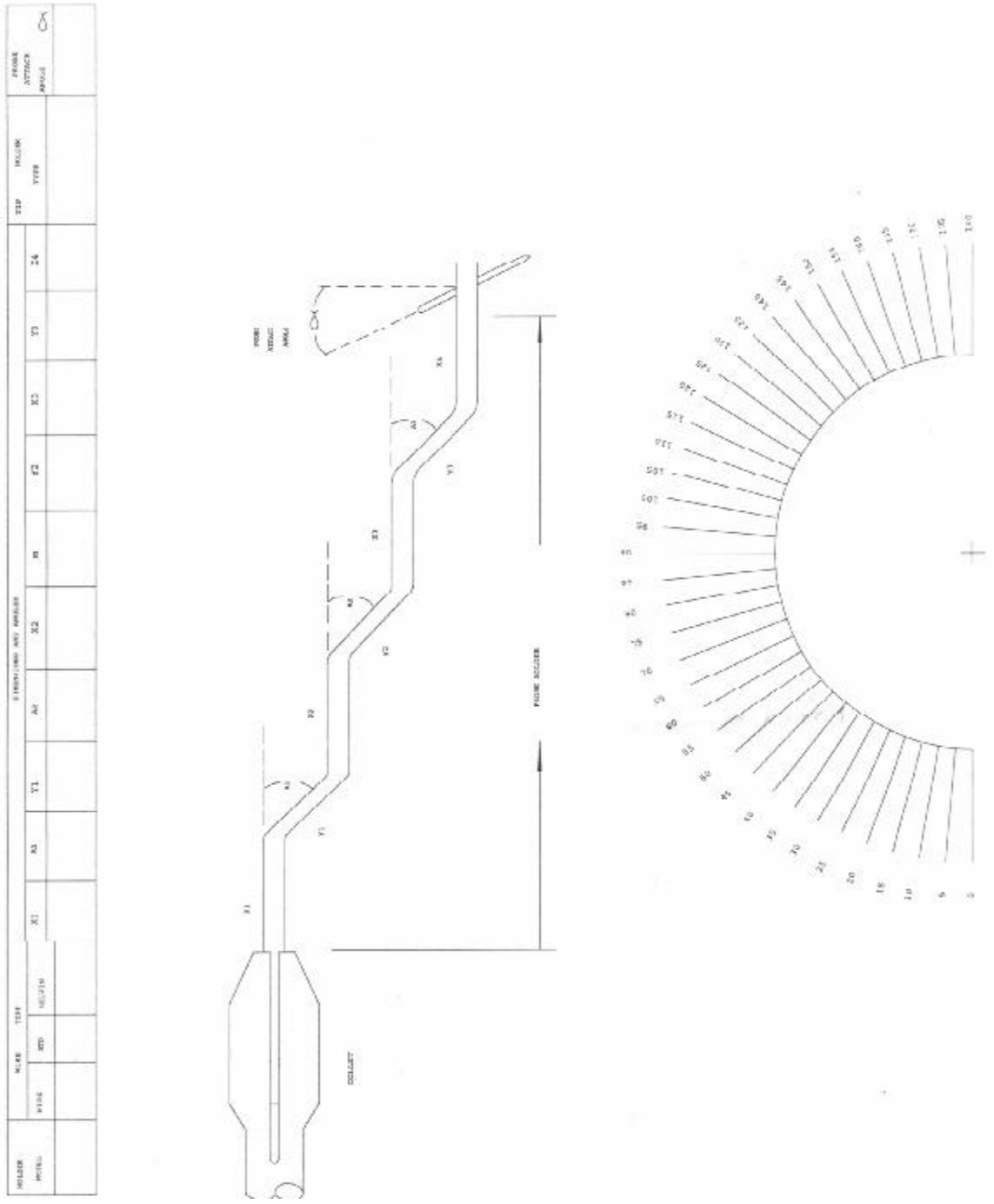


Figure 2.