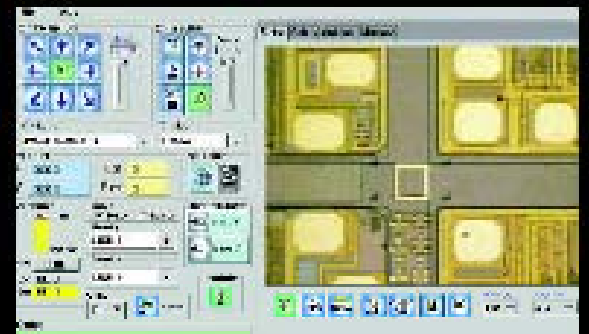
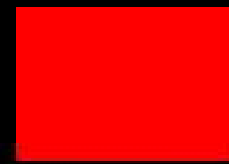


**The complete document is too large
for efficient web site transmission
and must be ordered
from Micromanipulator**



Analytical Test Stations and Accessories



Micromanipulator

Analytical Probing for Professionals

It was more than four decades ago that The Micromanipulator Company invented analytical probing. Since that time, we have been continuously advancing the state-of-the-art — and earning a reputation for excellence among professionals in the industry. Below are just some of our most popular products found in this and other Micromanipulator publications (identified by part number—p/n).

Product Type or Application

Model Numbers

Semi-automatic Analytical Probe Stations

9920 for 300mm wafers ----- 1
 8860 for 200mm and 150mm wafers ----- 2
 6640 for 150mm wafers ----- p/n A1007538
 4460 for 200mm and 150mm wafers ----- 3

Motorized Analytical Probe Stations

8065 for 200mm and 150mm wafers ----- 2

Manual Analytical Probe Stations

9020 and 9020S for 300mm wafer ----- 1
 8060 for 200mm and 150mm wafers ----- 2
 6200 for 150mm wafers ----- 6
 6150 for 150mm wafers ----- 6
 6000 for 100mm wafers ----- 6
 4060 for 200mm and 150mm wafers ----- 3
 Benchtop Prober, Model S8 for 200mm wafers -- 8
 Benchtop Prober, Model S6 for 150mm wafers -- 8
 350PM for 100mm wafers ----- 8

Specialty Application Probe Stations

2210 Large Area Substrate Prober ----- 8
 2230 Electromigration Probe Station
 with 2 platens ----- 9
 2245 ATS Probe Station ----- 9
 2250 Large Area Display Prober ----- 9

Automatic Wafer Handling Systems

For use with 300mm or 200mm wafers ----- 10

Double-sided and Backside Probing

Probe 300mm or 200mm wafers ----- 10

Emission Microscopy

FA-2000 ----- 11

High Voltage Silicon Carbide Probing Solution

200mm wafer prober ----- 10

RF/Microwave

Probe Station & Accessories ----- 7

Software

pcProbe II ----- 4
 NetProbe ----- 5

Super Submicron Probing (<100nm)

NANO-100® ----- p/n A1014101

Thermal Systems

H1000 ----- 11

9920 ----- 1
 9020S ----- 1
 9020 ----- 1
 9000-LTE ----- 13
 8860 ----- 2
 8800-TEMPSEAL ----- 13
 8800-SHIELD ----- 13
 8800-ISE ----- 13
 8800-DRYSHIELD ----- 13
 8065 ----- 2
 8060 ----- 2
 8000-LTE ----- 13
 7000-LTE ----- 13
 6640 ----- p/n A1007538
 6200 ----- 6
 6150 ----- 6
 6000 ----- 6
 4460 ----- 3
 4060 ----- 3
 2250 ----- 9
 2245 ----- 9
 2230 ----- 9
 2210 ----- 8
 350PM ----- 8
 Wafer Handling System ----- 10
 Triaxial Chucks (Ambient) ----- 12
 Stage Adapters ----- 12
 Socket Cards ----- 12
 RF/Microwave ----- 7
 Probe Tips ----- p/n A1009784
 Probe Holders ----- p/n A1009784
 Probe Card Holders ----- 12
 pcProbe ----- 4
 NetProbe ----- 5
 NANO-100® ----- p/n A1014101
 Manipulators ----- 14
 Low Current Probe Cards ----- 12
 Laser Cutters ----- 12
 High Voltage Probing ----- 10
 H1000 Thermal System ----- 11
 ----- p/n A1010480
 FA-2000 Emission Microscopy ----- 11
 Environmental Controls ----- 13
 Double-sided and Backside ----- 10
 Benchtop Prober, Model S8 ----- 8
 Benchtop Prober, Model S6 ----- 8



1555 Forrest Way
 Carson City, NV 89706

Tel: 775-882-2400
 Tel: 800-654-5659
 Fax: 775-882-7694

E-Mail: sales@micromanipulator.com
www.micromanipulator.com