

**Introduction**

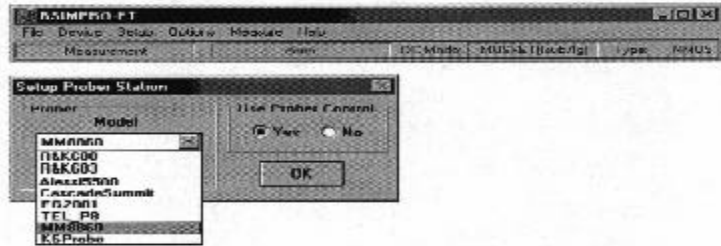
Micromanipulator's pcProbe II interfaces with a large number of special tool and applications. When using BTA BSIMPro, the interface is very easy. Take the following step:

The pcProbe II interface to Berkeley Technology's BSIMPro works through a DDE link to pcWafer. To operate this interface, the following steps must be taken:

Following are examples of the key screens.

**Select the Prober**

1. BSIMPro and pcProbe II with pcWafer must both be installed on the prober computer.
2. Set up the wafer map within pcWafer, set the reference position and save the file.
3. From the "Prober Select" menu within BSIMPro, choose the MM8860.
4. From the "Wafer Config" menu within BSIMPro, choose the wafer map to run.

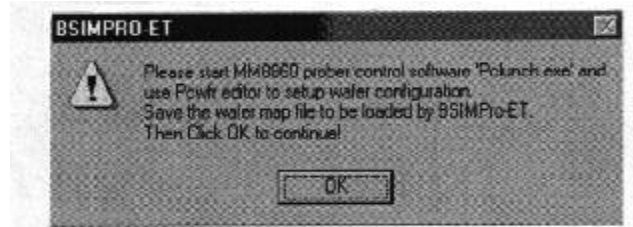


5. Start the measure window within BSIMPro. From here you can either step the prober manually, or go to any die within the stepping program from BSIMPro's pull down menu, or choose auto mode which will step the prober, then test until all die in the pcWafer map sequence have been tested. BSIMPro automatically stores data for each tested die if the auto store function is selected.

**Select the Wafer Map file**



**BSIMPro Prompts the user:**



1555 Forrest Way  
Carson City, NV 89706  
info@micromanipulator.com  
www.micromanipulator.com  
Tel: 775-882-2400  
Tel: 800-654-5659  
Fax: 775-882-7694  
Made in the USA

